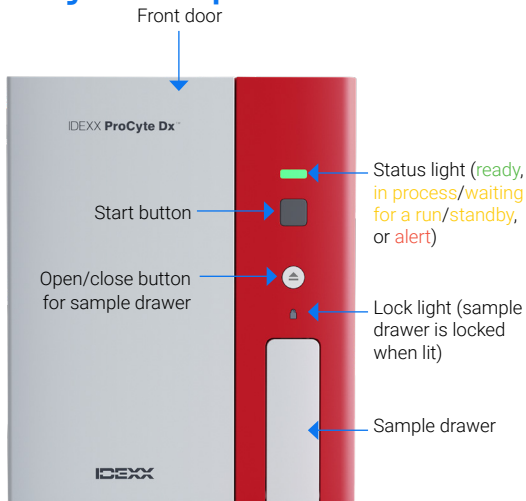


ProCyte Dx Hematology Analyzer

Quick Reference Guide

Analyzer components



Analyzing a sample

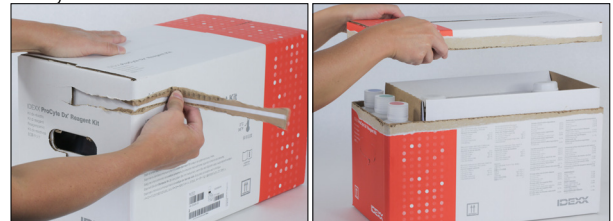
1. Collect the whole blood sample.
IMPORTANT: The ProCyte Dx™ Hematology Analyzer is compatible with many different collection tubes. Because the sample volume required varies by tube type, it's important to follow the manufacturer's guidelines to ensure proper EDTA-to-sample ratio, the tube isn't overfilled (which can lead to clotting or clumping), and the tube isn't underfilled, which can lead to morphological changes, such as red blood cell (RBC) shrinking (crenation).
2. Initiate the sample run on the IDEXX VetLab™ Station (for more information, see the *IDEXX VetLab Station Operator's Guide* at idexx.com/product-info).
3. After you've confirmed the patient information and sample type on the Select Instruments screen, select the **IDEXX ProCyte Dx** icon and then tap **Run**.
4. Read the on-screen instructions and tap **OK**.
5. Mix the sample with the anticoagulant by gently inverting the tube 10 times.
6. Immediately place the tube into the appropriate tube holder in the sample drawer.
IMPORTANT: If you are using a microtube, remove the cap before placing the tube in the microtube holder.
7. Press the **Start** button on the analyzer. The sample drawer automatically closes and the analyzer begins processing the sample.

Changing the reagent kit/stain pack

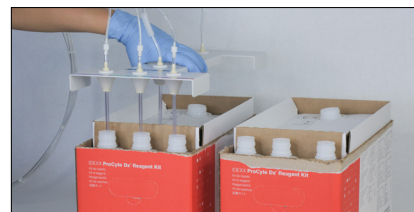
An alert displays when the reagent kit/stain pack is low, near expiration, empty, and expired. When the reagent kit/stain pack is low or near expiration, ensure you have a replacement kit in your inventory (and order a kit if necessary).

To change the reagent kit:

1. Either tap **Change Reagent** in the alert message or tap the **IDEXX ProCyte Dx** icon on the Home screen and then tap **Change Kit**.
2. Scan bar code #2 on the new reagent kit and tap **Continue**.
3. Open a new reagent kit by tearing away the easy-to-pull tabs, exposing the reagent shelf, and place it next to or below the analyzer.



4. Remove the caps from the 3 bottles, system diluent, and waste container (use the cap remover in the original accessory kit, if necessary) and set them aside. Verify the order of the bottles is correct by matching the color on the bottle labels with the colors on the shelf.
5. Place the quick-connect top onto the reagent kit, ensuring the probes are inserted into the 3 reagent bottles, the system diluent, and the waste container.



6. Tap **OK**.
7. Carefully remove each reagent bottle from the old reagent kit and dispose of the contents of each bottle according to applicable local disposal laws. Then place the caps from the bottles in the new reagent kit onto the bottles in the old reagent kit.

To change the stain pack:

1. Either tap **Change Stain** in the alert message or tap the **IDEXX ProCyte Dx** icon on the Home screen and then tap **Change Stain**.
2. Scan or enter bar code #2 on the new stain pack box and tap **Continue**.

3. Open the front door on the analyzer.
4. Unscrew the caps on a new stain pack.
5. Remove the old stain pack from the holder and place the new stain pack in its place.



6. Unscrew the probes from the old stain pack and place them into the new stain pack, ensuring each probe is inserted into the correct pouch (**the stain lines and caps are color-coded to match the labels on the stain pouches**).



7. Screw the caps from the new stain pack onto the old stain pack to ensure it doesn't leak.
8. Screw the probe caps onto the new stain pack and close the front door.
9. Tap **OK** to complete the update.

Maintaining your analyzer

For more detailed information, see the *ProCyte Dx Hematology Analyzer Operator's Guide* at idexx.com/product-info.

Run the monthly rinse procedure and QC (monthly)

1. If you don't have IDEXX Hydro-Clean, prepare a 5% bleach solution using one of these steps:
 - + Mix 2.5 mL plain, filtered, 6% sodium hypochlorite bleach with 0.5 mL deionized/distilled water.
 - + Mix 2.0 mL plain, filtered, 7.5% sodium hypochlorite bleach with 1.0 mL deionized/distilled water.

IMPORTANT: Only use filtered, unscented bleach without surfactants. Do not use gel, high-efficiency, outdoor, scented, or splashless bleach in the analyzer.

2. Either tap **Run Monthly Rinse** in the alert message or tap the **IDEXX ProCyte Dx** icon on the Home screen, tap **Diagnostics**, and then tap **Monthly Rinse**.

3. Follow the on-screen instructions.
4. When prompted, dispense 2 mL of IDEXX Hydro-Clean (or the 5% bleach solution) into a 13 x 75 mm untreated or rinsed EDTA tube (e.g., a VetCollect™ tube) and insert the tube into the standard/QC holder in the sample drawer on the analyzer.
5. Press the **Start** button on the analyzer.
6. When the monthly rinse procedure is complete, run quality control on your analyzer:
 - a. Tap the **IDEXX ProCyte Dx** icon on the IDEXX VetLab Station Home screen.
 - b. Tap **Quality Control**.
 - c. Select the quality control lot you want to use and then tap **Run QC**.

Note: If there are no valid QC lots available, add a new quality control lot.
 - d. Tap **Next**.
 - e. Allow an e-CHECK™ (XS) vial to reach room temperature (18°C–25°C [64°F–77°F]) for at least 15 minutes. Do not let the vial exceed room temperature.

Note: Do not warm the vial in your hands or with any other warming apparatus.
 - f. Verify the e-CHECK (XS) vial cap is secure and gently invert the vial to mix until the cell button in the bottom of the vial is completely suspended.

Note: Inverting the vial occasionally during the warm-up process will decrease the amount of time it takes to complete this step. Never use a mechanical mixer or rocker for this step.
 - g. Immediately place the e-CHECK (XS) vial into the standard/QC holder in the sample drawer.
 - h. Tap **OK**.
 - i. Press the **Start** button on the analyzer.
 - j. Once the procedure has completed, the e-CHECK (XS) vial can be returned to the refrigerator as long as it was at room temperature for less than 1 hour.

Note: e-CHECK (XS) is stable for 14 days once the cap is pierced.

Clean the fan filter (monthly)

1. Open the analyzer's right side door.
2. Remove and vacuum the fan filter.
3. Replace the filter in the analyzer and close the right side door.