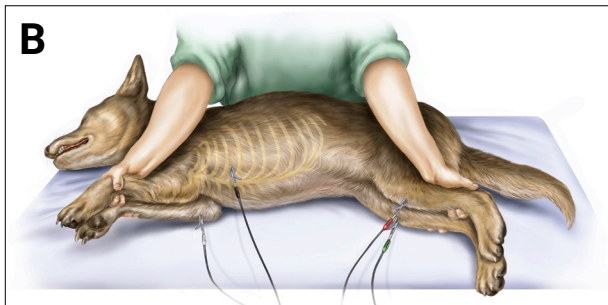
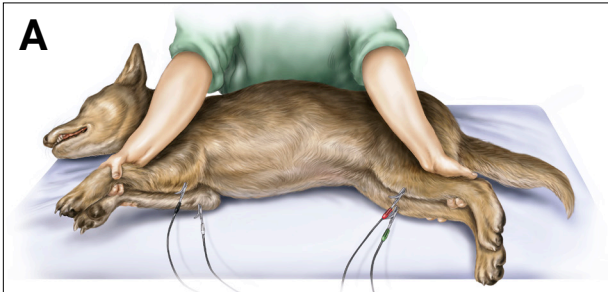


Quick Reference Guide

Preparing the patient for an ECG

1. Place the animal on a padded surface in right-lateral recumbency (when possible). If the animal is shaking, place your hands on either side of the chest and apply moderate pressure.
Note: The patient can also stand upright or be in sternal position; however, be sure to note these positions in the patient history when you submit the case.
2. Liberally apply alcohol or ultrasound gel to each limb, 1"–2" below the elbows and knees (where the clips will be attached).
3. Attach the CardioPet™ Comfort Clips, being sure to part the fur for good skin contact, as follows (see image A for a typical ECG and see image B for a chest lead ECG):



+ **Black:** Position varies depending on the type of ECG being recorded:

- Typical ECG: Left-front leg
- Chest lead ECG: Left side of chest between the fourth and fifth ribs (wherever the heartbeat is strongest with touch or auscultation); lead I will appear as the chest lead.

Note: Add "Chest lead included" in the patient history when you submit the case at [VetMedStat.com](https://vetmedstat.com).

+ **Red:** Left-rear leg

+ **White:** Right-front leg

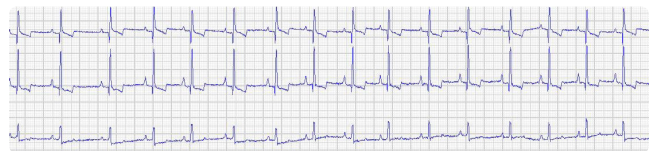
+ **Green:** Right-rear leg

IMPORTANT: Make sure that the patient's limbs, the cables, and the clips do not touch one another or touch metal.

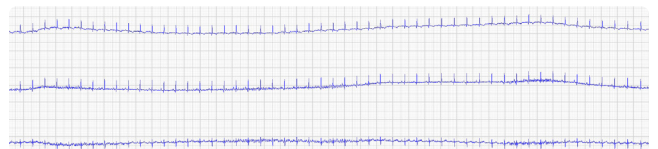
Recording an ECG and submitting it to IDEXX Telemedicine Consultants

Follow the steps below to record an ECG using the CardioPet™ ECG Device with either CardioPet™ software or the CardioPet™ app on an iOS™ or Android™ device.

1. Open the CardioPet software or CardioPet app.
2. Turn on the CardioPet ECG Device.
3. If using CardioPet software, click **New ECG**. The wireless communication light on the device illuminates, and the ECG starts streaming in the CardioPet software.
OR
If using the CardioPet app, the wireless communication light on the device illuminates, and the ECG starts streaming in the CardioPet app.
4. If prompted, select the patient species: **Canine, Feline, or Other**.
5. Confirm the tracings are diagnostic.




Example of a successful canine ECG



Example of a successful feline ECG


Continued on the next page

6. Click **Start Recording** . A timer appears in the bottom right corner of the window.
Note: Recording stops automatically after 30 or 60 seconds, depending on the software/app setting. The ECG must be at least 20 seconds long.

Important: The Record button will change to the next action in the acquisition process, for example: Stop, Select Patient & Save, Start a Case.

7. Click **Select Patient & Save**.
8. The remaining steps vary depending on if you're using CardioPet software/app with(out) IDEXX-PACS™ or IDEXX Web PACS™ integration:

If you're using the CardioPet software/app with IDEXX-PACS/IDEXX Web PACS integration:

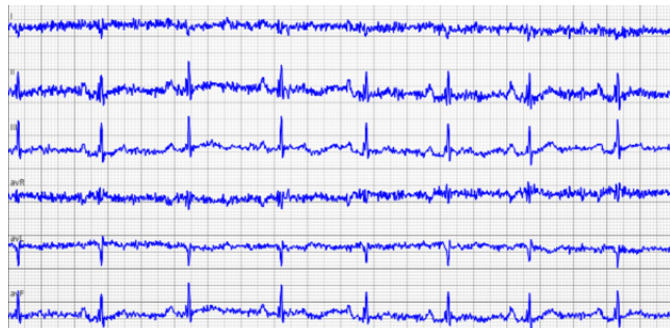
- a. Choose an existing patient or add a new patient using the **Add** icon and then click **Save** to confirm. The ECG will be transferred to the patient's card in the PACS software.
- b. In IDEXX-PACS or IDEXX Web PACS, choose the ECG, click **Start a Consult**, and then follow the on-screen prompts to complete the case submission.
Note: You can also use the Share icon  in the patient card to submit a case; however, you will need to complete the submission at VetMedStat.com when prompted.

If you're using the CardioPet software/app without IDEXX-PACS/IDEXX Web PACS integration:

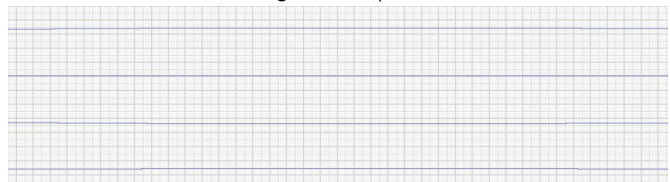
- a. Choose an existing patient or add a new patient using the **Add** icon and then click **Save** to confirm.
- b. Click **Start a Case** and then select **Finish Now** or **Finish Later**.
- c. Complete the case submission at VetMedStat.com.

Possible causes for non-diagnostic ECG results

- + Loose/detached clips or artifact caused by panting/shaking/vocalizing



- + No alcohol/ultrasound gel on clips



- + Inaccurate clip placement



For additional help, visit idexx.com/telemedresources or call **1-800-726-1212**.